

AMMIRAGLIA

20
19



INDEX	02
REPORT	03
TECHNICAL TRAINING - MTB	04
TECHNICAL TRAINING - EBIKE	05
TECHNICAL TRAINING - BDC	06
SHOWROOM	07
HIVE TOUR	08



Participating customers



Ammiraglia events, including the day dedicated to media



Technical training with issuing of certificate



Speakers



Of exhibition area



Meals served



Hotel rooms booked



Transfer from / to airport / stations

2019 vs 2018

- +23%** participating customers
- 47%** loyal customers (Ammiraglia participation 2018 and 2019)
- 91%** of satisfied participants



MTB WORLD



FORKS

- Analysis of the different performance of air and spring fork.
- Fork travel adjustment in the air and coil fork.
- Basic calibration (SAG, registers).

REAR SHOCK

- Hardware installation and correct fitting on the frame.
- Analysis of the different performance of air and coil shock absorbers.
- Coil change procedure in the Cane Creek DB and DB IL shocks.
- Progression change procedure in the Cane Creek CCDB AIR and CCDB AIR IL.
- Basic calibration (SAG, registers).
- Correct choice of the MTB coil and EBIKE coil.



550+
participants

97%
of participants
had positively
reviewed the training





INTERVENTIONS ON EBIKE

- Overview of the EBIKE world.
- Issues related to out-of-warranty components:
 - Repair of second generation Bosh Performance CX engines;
 - battery pack replacement.
- Legislation and procedures on battery disposal.



550+
participants

95%
of participants
had positively
reviewed the training





INTRODUCTION TO THE FSA AND VISION ACR / SCR / ICR CABLE INTEGRATION SYSTEMS

- Presentation of the integrated or semi-integrated systems of the cables in the steering and in the frames. These innovative systems, a combination of the know-how and the FSA and Vision experience in the production of headset and handlebars, improve aesthetics and the aerodynamic coefficient of the frame.

ACR SYSTEM COMBINED WITH THE WE DISC GROUP

- Assembly of the Vision ACR integration system combined with disc brake units, in particular WE DISC:
 - brake hose passage;
 - braking system bleeding;
 - replacement of the "Quick Connect" of the braking system with the universal coupling in addition to possible shortening of the brake housing.
- Matching of the shift levers with front and rear derailleurs.

POWER ROAD POWER METER IN COMBINATION WITH SPH DATA ANALYSIS SOFTWARE

- Assembly and configuration of the crankset with a Power Box Road power meter combined with the SPH data analysis software (www.sportplushealth.com).



550+
participants

90%
of participants
had positively
reviewed the training

FSA
FULL SPEED AHEAD

Vision



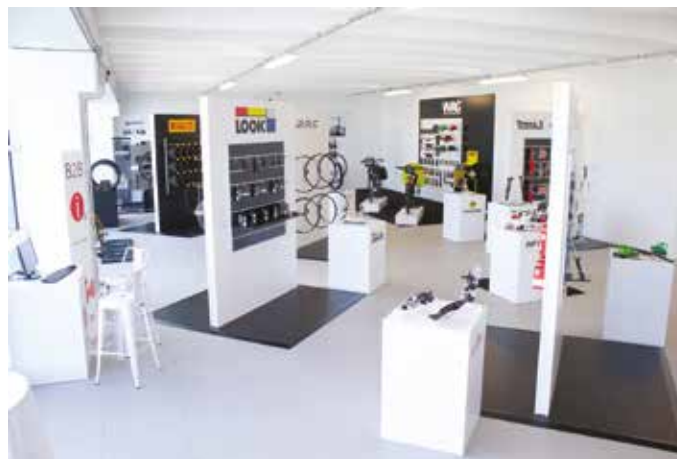
SHOWROOM is the area dedicated to the exhibition of the most important brands and products of RMS. Spread over an area of over 300 square meters.



300 sqm
of exhibition area

over 25
brands displayed:

Fsa	Drc	Alligator	Icetoolz
Vision	Kenda	Tranzx	Blackspire
Prologo	Cushcore	Infini	Sapim
Xplova	Look	Kmc	Cane Creek
Pirelli	Kryptonite	Sunrace	Bafang
Wag	Magura	Bosch	SKS
Bosch	BTA	Peruzzo	Milkit
BiciSupport	Marwi	Shimano	Prowheel
			VP





HIVE WAREHOUSE EXPANSION TOUR
HIVE warehouse EXPANSION tour - guided tour of the company to discover the expansion of the automatic warehouse which this year included two new automatic stacker-cranes.

BIGGER, MORE PRECISE, FASTER.
HIVE is the fully automated warehouse. It represents the last step to compete more effectively in the world of distribution.



550+
participantS




[pictures](#)


[back to report](#)

AMMIRAGLIA

20
19



 Via Macallè 156
20831 Seregno - MB

 +39 0362 27 301

 info@rms.it

www.rms.it

